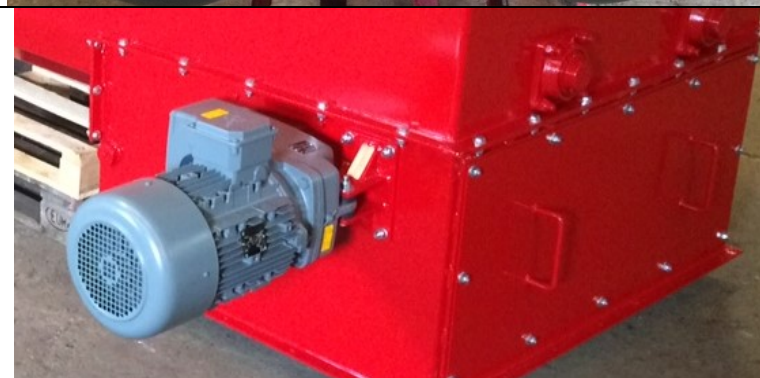
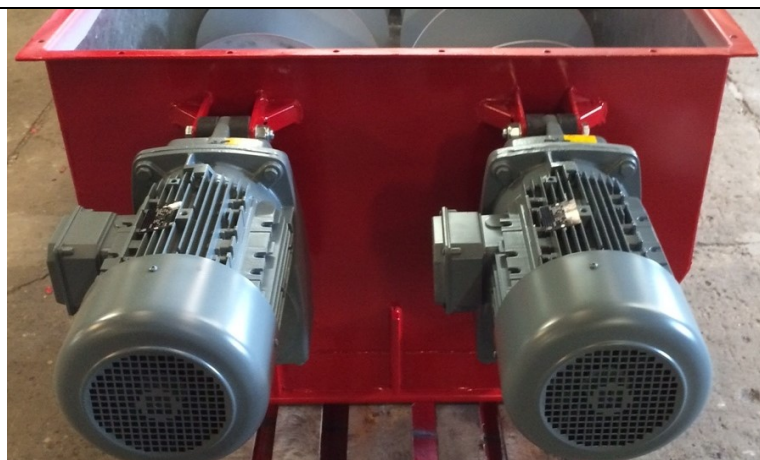


Data Sheet	TDA discharge auger
------------	---------------------

januar 11, 2021



Picture



Machine function

The discharge auger is used to stop loading to the hammer mill when it is overloaded and to ensure smooth filling to the hammer mill, by regulating the speed by use of a frequency inverter.

Machine number

1040-500

Machine paint

Standard ISO 12944-5 category C2.  
Machines, guards etc. comes in a color type RAL 3001 red suitable for indoor, non corrosive environment - water and oil resistant -15 to + 60 degrees C, surface purified with alkaline degreaser, painted with a machine primer and here after coating paint.

Custom tariff number

84369900

Starter and wiring

2x Frequency inverter, 4 x 1,5 mm<sup>2</sup>, Shielded cable. Automatic reverse at overload, 80% of A<sub>max</sub> more than 0,7 sec. reverse 2 sec. And forward again.

**WARNING!:** NEVER MORE THAN 2 SEC. REVERSE

Gear motor

TDA	400	500	600
kW 2x	5,5	5,5	5,5
Weight [Kg]	700	1000	1500
L/W/H [M]	4/1/0,8	4/1,2/1,2	4/1,4/1,4

Oil type and change interval

Filled from supplier: Shell Tivela S320 (use similar)  
Exchange every: 2000 hours.

Measures

H=650 mm, W=620 mm and L=2500 mm, l=1000 for MTX H 18, l=2000 for MTX 22-50

Data Sheet	TDA discharge auger
------------	---------------------

januar 11, 2021



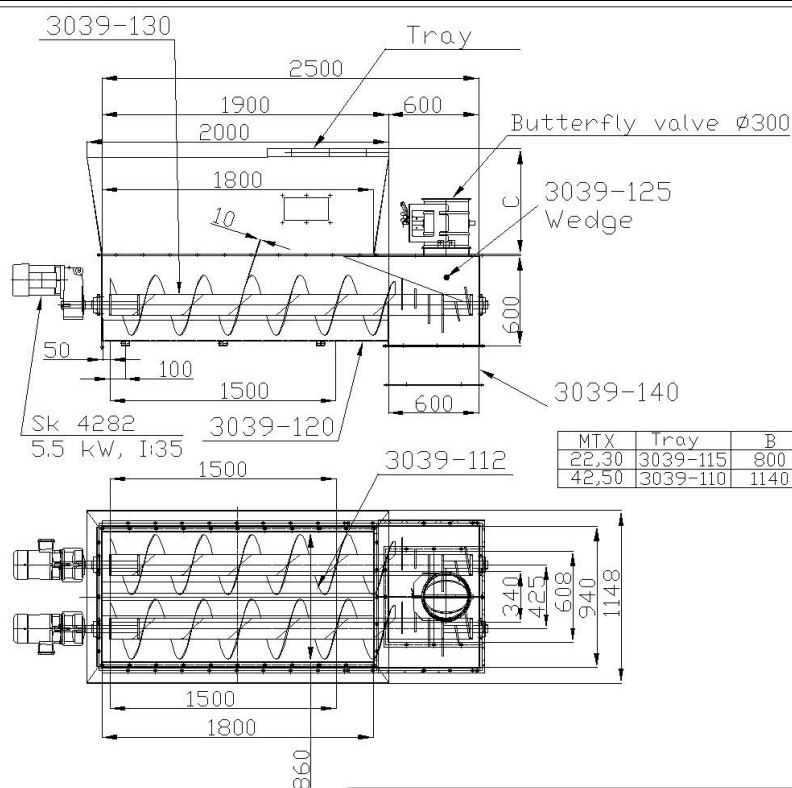
Standard	DS/EN 60204-1:2006 Safety of Machinery - Electrical Equipment of Machines, DS/EN ISO 13850 of January 29th 2007 emergency stop, DS/EN ISO 13849-1 safety-related parts of control systems
----------	---

RISK ASSESSMENT - Machine	This machine cannot work as a “Stand Alone”, and can therefore not be delivered with a CE marking. It is designed to be used with a MTX_H straw bale breaker machine.
---------------------------	--

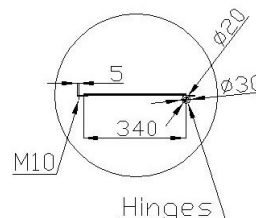
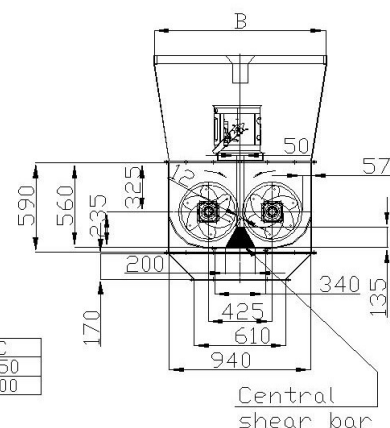
Analyzed risk following EN-ISO 13849-1:	S	F	P	PLr
1. Mounting: The machine is provided lifting positions that ensures balance when lifting and strong enough to hold machine load. Work place assessment should be made, before start with mounting.	S2	F1	P1	c
2. Operating: The machine has to be mounted with a closed filling device, cormall MTX_H straw mixer or similar, and with a closed connected outtake device, Cormall straw scratcher or similar.	S2	F1	P1	c
3. Servicing: All lubrication positions are from safe position.	S1	F1	P1	a
4. Renovation: On the bottom of the machine is placed a access door into the augers from underneath, when opening this the machine must be turned off on the main switch and locked. This is to remove material that is blocking the auger.	S2	F1	P1	c
5. Scrapping/recycling: same comment as under 1. Mounting	S2	F1	P1	c

januar 11, 2021

## TDA 400 for MTX H



MTX	Tray	B	C
22,30	3039-115	800	550
42,50	3039-110	1140	700



Matr.

$$\overline{cormale}$$

130822MN

Mal	1:30
-----	------

Del for	MTX_H 18-50/SBB1800
---------	---------------------

Benevni:

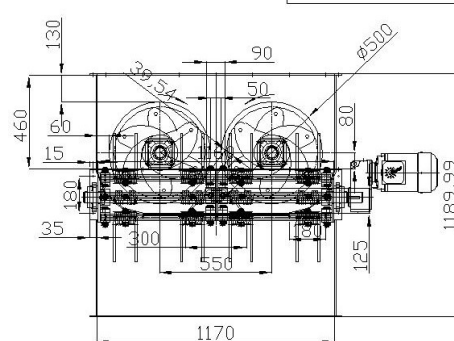
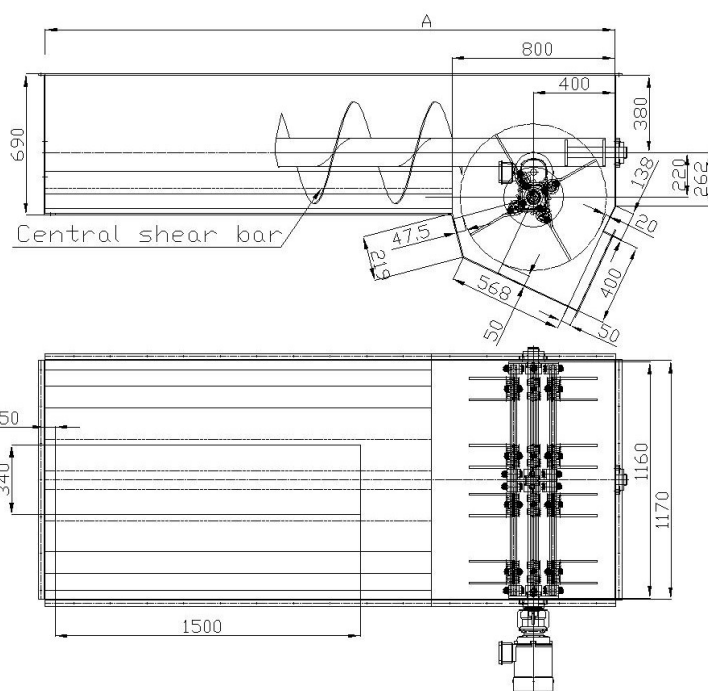
Twin 2xØ400 discharge and control auger

Date

	Rettelse
--	----------

	Symb.	Sign.
--	-------	-------

## TDA 500



SBB	2000	1800
A	2500	4000
B	1900	3400

All welds a5

Matr.

cormale

160621MN

Mal	1:20
-----	------

Del for	Astrade
---------	---------

Benevolence:

TDA 2xØ500 with Scratcher

	Date
--	------

	Rettelse
--	----------

Symb.	Sign.
-------	-------

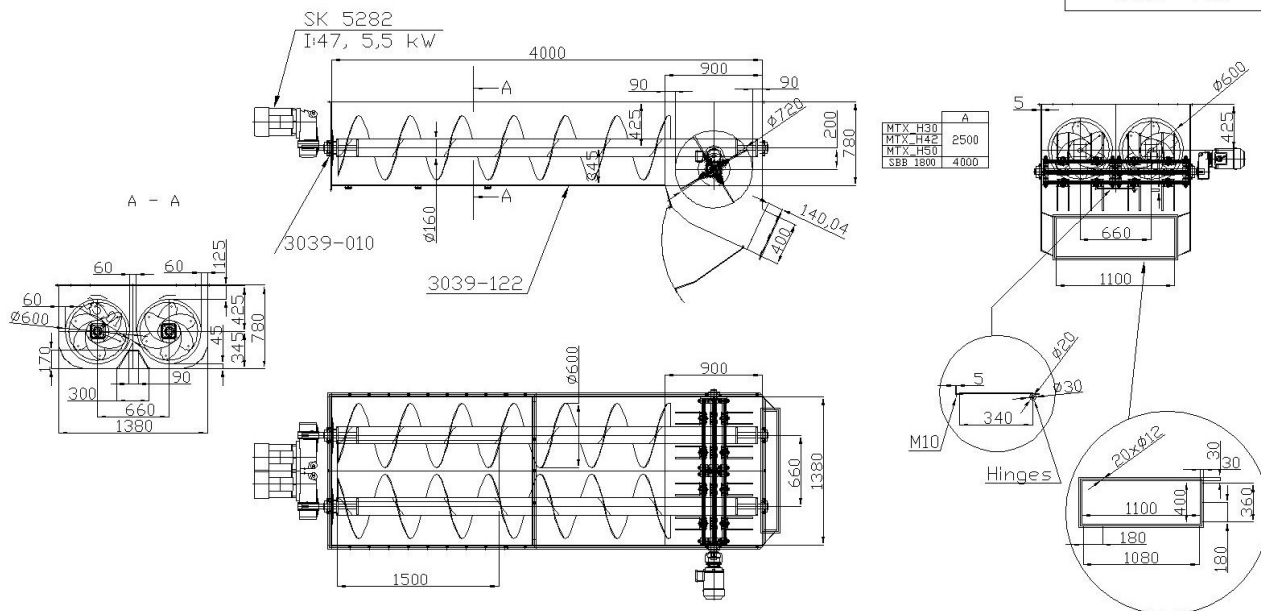
# Data Sheet TDA discharge auger

januar 11, 2021



## TDA 600

nr. 1039-106



Matr.

—

cormall

160208MN

Mal

1:30

Del for

MTX\_H 22/30/42/50

Benavnelse:

Twin 2xØ600 discharge and control auger

Dato	Rettelse	Symb.	Sign.