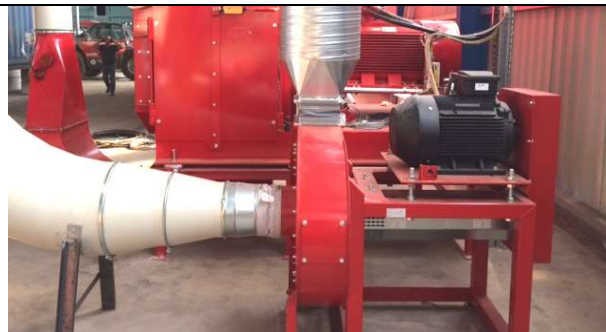


Picture



Filter



VENT

Machine function

Filter using compresses air for washing the hoses and keeping them clean of dust by blowing air into the filter during the process. The type of material used for the filter, ensures that the air coming out, contains less than 15 mg per Nm³. Down to 5 mg is possible with different filter bags.


The filter is working as aspiration filter directly from process and without any cyclone in from of the filter. All processed material is going into the filter.

Special inlet covers is protecting the filter bags, large material outlet opening is ensuring that build up material will not start bridging inside the filter, unless very wet material is filled into it

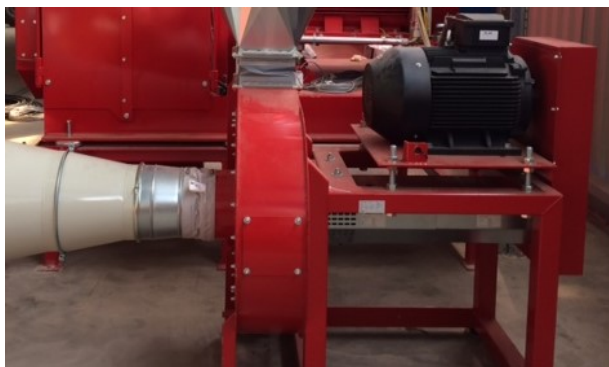
The filter cannot work correct without rotary valve to take out material in the bottom of it, thus ensuring that vacuum is kept inside the filter.

The filter also needs a ventilator to create the vacuum.




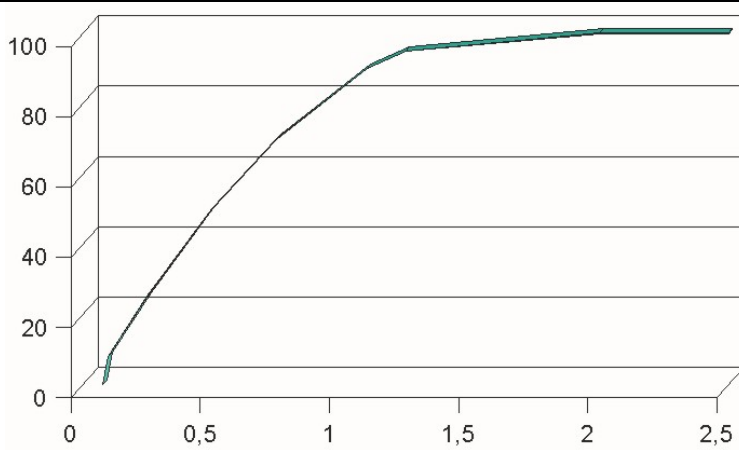
VENT: the ventilator makes the vacuum inside the filter. The inlet into the ventilator has to be made as a long coned inlet and not with a flat plate with a hole, efficiency difference can be up to 30% loss.

SF aspiration filters	Type	W / H*	m ³ /h	m ²
	21/15	1300 / 1500	2500	14
	32/20	1300 / 2650	5000	28
	41/25	2000 / 3650	8100	45
	41/30	2000 / 3650	9700	54
	41/35	2000 / 4150	11400	63
	41/40	2000 / 4650	13000	72
	70/25	2400 / 3650	13900	77
	70/30	2400 / 3650	16600	92
	70/35	2400 / 4150	19500	108

*) without outlet cone.

VENT	Type	Nm ³ /h	kW	Pa
	50	6000	7,5	3000
	80	8000	37	9000
	100	10000	45	10000
	120	12000	55	10000
	200	20000	75	10000

Machine number Filter	1041-100			
Machine number VENT	1041-110			
Machine paint	Standard ISO 12944-5 category C2. Machines, guards etc. comes in a color type RAL 3001 red suitable for indoor, non corrosive environment - water and oil resistant -15 to + 60 degrees C, surface purified with alkaline degreaser, painted with a machine primer and here after coating paint.			
Custom tariff number	84369900			
Standard	DS/EN 60204-1:2006 Safety of Machinery - Electrical Equipment of Machines, DS/EN ISO 13850 of January 29th 2007 emergency stop, DS/EN ISO 13849-1 safety-related parts of control systems, DS/EN 60204-1: 2006, cable installation method E			
Filter data.	Filter	32/20	41/35	70/35
	Air m ³ /h	5.000	10.000	20.000
	Comp. air bar	4-6	4-6	4-6
	Comp. m ³ /h	20-30	25-35	35-50

RISK ASSESMENT - Machine	This machine cannot work as a “Stand Alone”, and can therefore not be delivered with a CE marking.																																						
RISK ASSESMENT – ATEX	<table><tr><td></td><td colspan="2">GESTIS-STAU-EX</td></tr><tr><td>Material</td><td>Stroh (2213)</td><td>Miscanthus</td></tr><tr><td>Feuchte</td><td>-</td><td>10,2 %</td></tr><tr><td>Korngrösse < 500 µm</td><td>96%</td><td>56%</td></tr><tr><td>Korngrösse < 125 µm</td><td>26%</td><td>35%</td></tr><tr><td>Median-Wert µm</td><td>200 µm</td><td>280 µm</td></tr><tr><td>UNtere Ex-Grenze</td><td>125 g/m³</td><td>60 g/m³</td></tr><tr><td>Max Ex Überdruck</td><td>8,0 bar</td><td>7,7 bar</td></tr><tr><td>K_{ST}-Wert [bar m/s]</td><td>47</td><td>115</td></tr><tr><td>Ex-Fähigkeit</td><td>St1</td><td>St1</td></tr><tr><td>Zündtemp.</td><td>470 C</td><td>-</td></tr><tr><td>Glimmtemperatur</td><td>310 C</td><td>-</td></tr></table>				GESTIS-STAU-EX		Material	Stroh (2213)	Miscanthus	Feuchte	-	10,2 %	Korngrösse < 500 µm	96%	56%	Korngrösse < 125 µm	26%	35%	Median-Wert µm	200 µm	280 µm	UNtere Ex-Grenze	125 g/m³	60 g/m³	Max Ex Überdruck	8,0 bar	7,7 bar	K _{ST} -Wert [bar m/s]	47	115	Ex-Fähigkeit	St1	St1	Zündtemp.	470 C	-	Glimmtemperatur	310 C	-
		GESTIS-STAU-EX																																					
	Material	Stroh (2213)	Miscanthus																																				
	Feuchte	-	10,2 %																																				
	Korngrösse < 500 µm	96%	56%																																				
	Korngrösse < 125 µm	26%	35%																																				
	Median-Wert µm	200 µm	280 µm																																				
	UNtere Ex-Grenze	125 g/m³	60 g/m³																																				
	Max Ex Überdruck	8,0 bar	7,7 bar																																				
	K _{ST} -Wert [bar m/s]	47	115																																				
Ex-Fähigkeit	St1	St1																																					
Zündtemp.	470 C	-																																					
Glimmtemperatur	310 C	-																																					
<p>Wheat Straw:</p> <p>We have primary evaluated the risk for dust explosion based on the conditions that have to be full filled with regard to dust explosion, and have used the official figures from the German institute BGIA:</p> <p>As translation to the above table sheet is the most important figures as follows:</p> <ul style="list-style-type: none">- Fragmentation must contain 96 % below 0,5 mm.- From this must 26 % be below 0,125 mm- The medium length must be 0,2 mm <p>The fragmentation of any straw quoted from 6 mm screen and more:</p> <ul style="list-style-type: none">- 96 % will be more than 1,3 mm <p>We declare that the machinery will not create any situation that can course explosive burning of the straw or of the straw dust.</p>																																							
Screening sample with 6 mm screen in hammer mill, showing safety margin with regard to ATEX standard and BGIA measures	 <p>Straw dust fragment in % (w. 6 mm milling screen)</p>																																						
ATEX optional equipment	<ul style="list-style-type: none">- Explosion door on filter, VDI 3673, Kst: 80 barxm/s- Anti static filter bags																																						

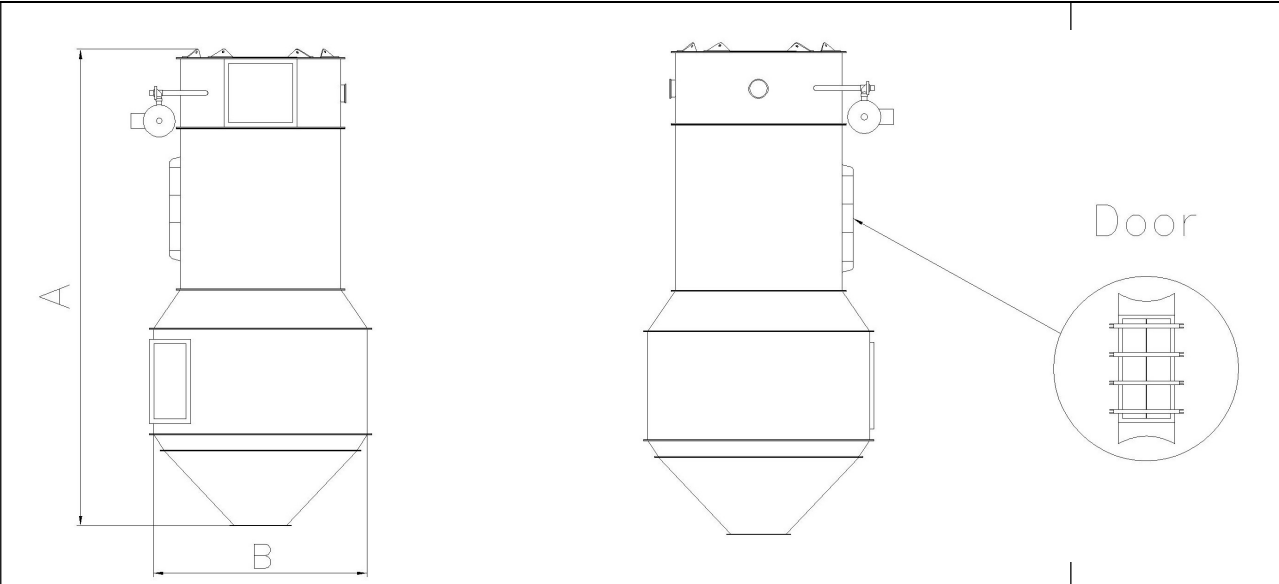
Data Sheet | SF & VENT - Straw filter & ventilator



januar 11, 2021

Spare parts:

Machine	Spare parts	Item number	Normal wear	Accidental	Warranty part	Cormall/Supplier stock	Lead time	Units
Filter	Bag for filter (6000h)	996	X			+	D	1
	Filter blowing valve	996	X			+	D	1

					
SF	Type	B x H (without cone)	Cone with Ø 500 valve	H + cone = A	Filter area m ²
25	21/15	1300 / 1500	550	2050	14
50	32/20	1300 / 2650	550	3200	28
81	41/25	2000 / 3650	1050	4700	45
97	41/30	2000 / 3650	1050	4700	54
114	41/35	2000 / 4150	1050	5200	63
130	41/40	2000 / 4650	1050	5700	72
139	70/25	2400 / 3650	1350	5000	77
166	70/30	2400 / 3650	1350	5000	92
195	70/35	2400 / 4150	1350	5500	108